

Kassel Kerb® plus

A common level for ALL!



The Kassel Kerb® plus is a consistent, logical development of the internationally sought-after Kassel Kerb®, which stands for accessible vehicle stops. It is now possible to board and alight completely step-free. This increases safety and convenience for all users, including those who have impaired mobility.

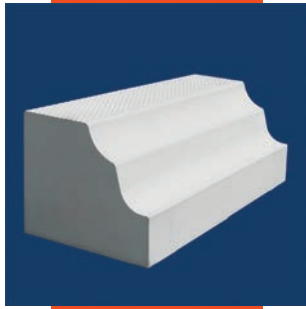
Another plus: Avoidance of vehicle body damage on approaching the stops. The new curved profile of the Kassel Kerb® plus enables controlled gliding of low-floor buses to the bus stop, without collision.

A patent application has been filed for Kassel Kerb® plus.



PROFILBETON

The diamond shaped and particularly wide top of the Kassel Kerb® plus increases traction and therefore resistance to slipping in ice and snow and has a high resistance to frost and road salt.



The Kassel Kerb® plus characterises vehicle stops.

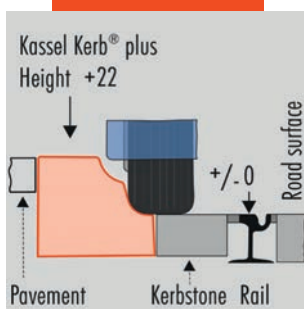


The light coloured concrete of the Kassel Kerb® plus forms a clear contrast to the pavement and carriageway and creates an optimal orientation aid, not only for people with impaired vision.

The curved profile enables vehicles to approach the stop even more safely, while at the same time avoiding damage to the bodywork.



The curved profile of the Kerb® plus guides the vehicle directly into the stopping position. Before the lateral forces act, the tyres stabilise the Kerb® plus and make it resistant to movement.



Kassel Kerb® plus

The innovative addition to the low-floor system – completely step-free

Any operator who deploys low-floor vehicles must also design the vehicle stops appropriately, so that the transport system components match each other with regard to accessibility and convenience. The Kassel Kerb® plus is an innovative element, which makes accessible local public transport possible.

If a stop is fitted out with the Kassel Kerb® plus, the floor of the low-floor vehicles and the stop are on the same horizontal plane. At these stops passengers can enter and leave buses, trams and trains conveniently and safely.

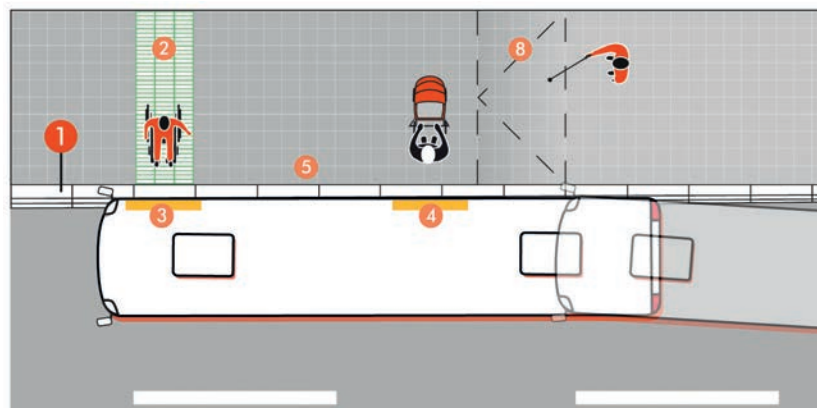
As part of the design of stops in conjunction with low-floor vehicles Profilbeton's Kassel Kerb® plus is a decisive link in the mobility chain. Accessible local public transport is therefore assured.

The staggered height stop

If a parallel approach to the stop is not possible, the concept of the staggered height stop should be applied. In this case, the stop has a rising level, which is bridged using ramps, which enable safe passing.

The low-floor bus is guided to the rising alighting edge. The approach surface of the Kerb® plus is adapted to the tyre cross-section and ensures optimal guidance with self-steering effect. The vehicle is guided into its planned stop position.

- | | |
|-------------------------|------------------------|
| ① „Kassel Kerb® plus“ | ⑥ Approach area (H+16) |
| ② „Kassel Tactile Slab“ | ⑦ Pavement (H+12) |
| ③ Front bus door | ⑧ Ramp |
| ④ Rear bus door | ⑨ Low-floor bus |
| ⑤ Boarding area (H+22) | |



The Kassel Kerb® plus

more safety – more convenience – design for all

The design of the stops affects the attractiveness of local public transport to a large degree and characterises the appearance of our towns and cities. Accessibility is an essential quality characteristic. Profilbeton's Kassel Kerb® plus provides more safety and improved convenience – and absolute accessibility. With our experience acquired in Germany and the projects completed worldwide, we are your competent contact – from the planning and design through to the implementation of your projects.

Mobility chain

The Kassel Kerb® plus forms an important element at the stop/vehicle interface in the accessible mobility chain. It characterises the accessible stop by enabling step-free boarding and alighting.

The conspicuously light colour of the profiled kerb emphasises the edge and provides the visually impaired with a necessary orientation aid. The structured surface achieves even more safety on boarding and alighting.

The vertical distance

The new curved profile guides the bus optimally to the stop. Low-floor buses glide to the boarding edge in a controlled way. The particularly smooth approach surface, adapted to the tyre cross-section, produces guidance with self-steering effect.

This increases convenience for all users, especially for impaired mobility passengers, such as wheelchair users, parents with pushchairs, older people or people travelling with bicycles, bulky shopping bags or dogs.

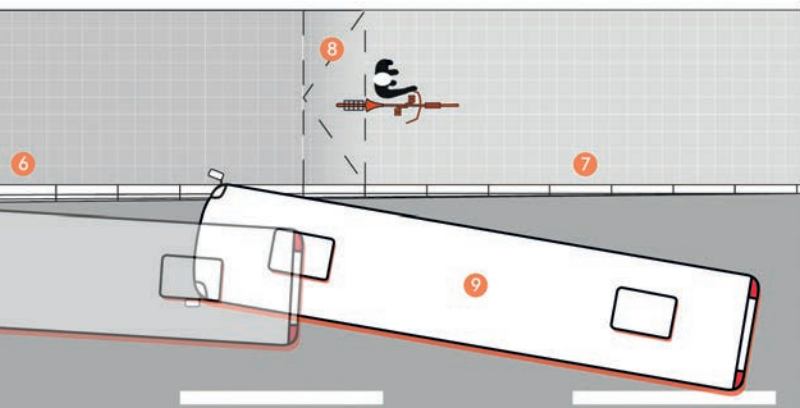
All on one level

The new curved profile enables closer approach of the low-floor vehicles to the stop and therefore achieves closer positioning of the vehicle. The horizontal gap is small. This means the passengers are on the safe side. Use of bus and rail transport becomes easier and more convenient for all.

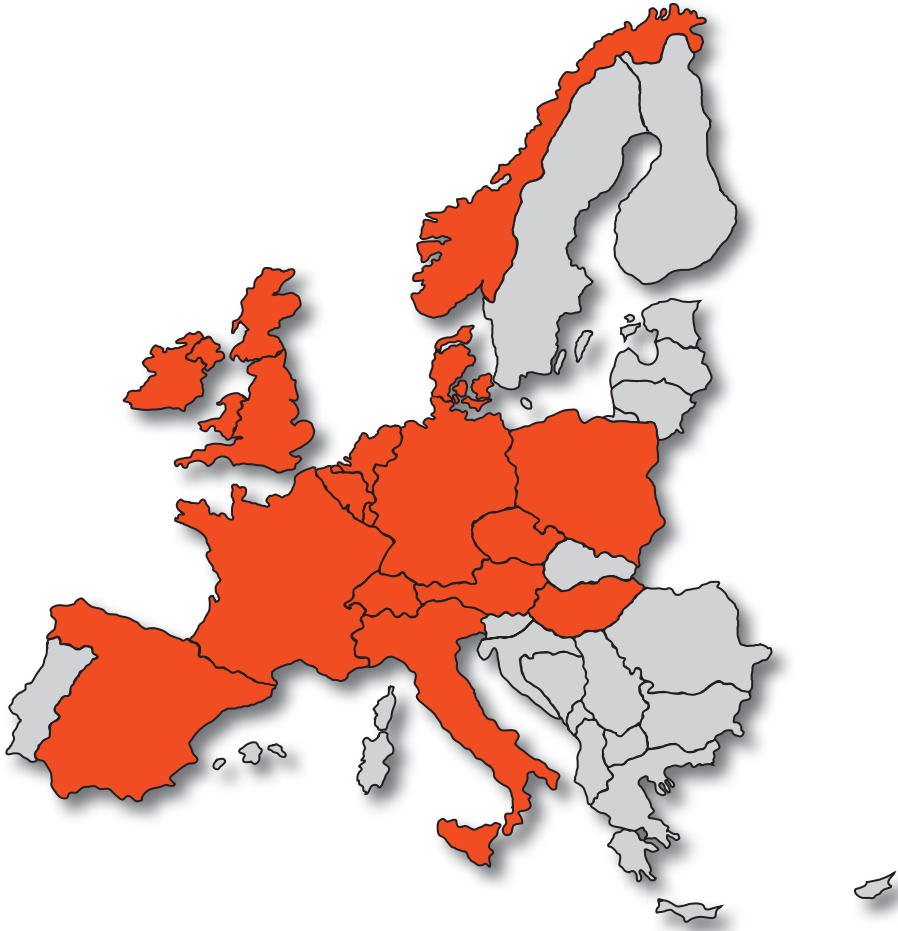
It has been proven that the possibility of more exact positioning of the bus also helps to protect against damage to the tyres. The same applies to low-floor rail vehicles with regard to their bodywork.

Shortening of the stop phases

The flow of passengers becomes even more convenient and faster due to the step-free boarding and alighting. Therefore, shorter stop phases are possible. Local public transport (ÖPNV) runs more smoothly – that saves time.



Kassel Kerb® plus:
all over Europe!



The Kassel Kerb® plus
is patent protected



The quality management
system has been certified
according to DIN EN ISO 9001

Contact us:

PROFILBETON GmbH
Waberner Straße 40
D - 34582 Borken/Hessen

Phone +49 (0)56 82 - 73 86 0
Fax +49 (0)56 82 - 73 86 42

www.profilbeton.de
info@profilbeton.de



PROFILBETON



Carsten Hasch
Management

e-mail: carsten.hasch@profilbeton.de



Lars Schaubhut
Sales Management

e-mail: lars.schaubhut@profilbeton.de



Marco Rudel
Head of
Engineering/QM

e-mail: marco.rudel@profilbeton.de



Tanja Streitmatter
Head of Back Office

e-mail: tanja.streitmatter@profilbeton.de



Barbara Pinto
Technical
consultation

e-mail: barbara.pinto@profilbeton.de



Sven Carus
Regional Sales
North/East

e-mail: sven.carus@profilbeton.de

Your Contact Partners at



PROFILBETON

